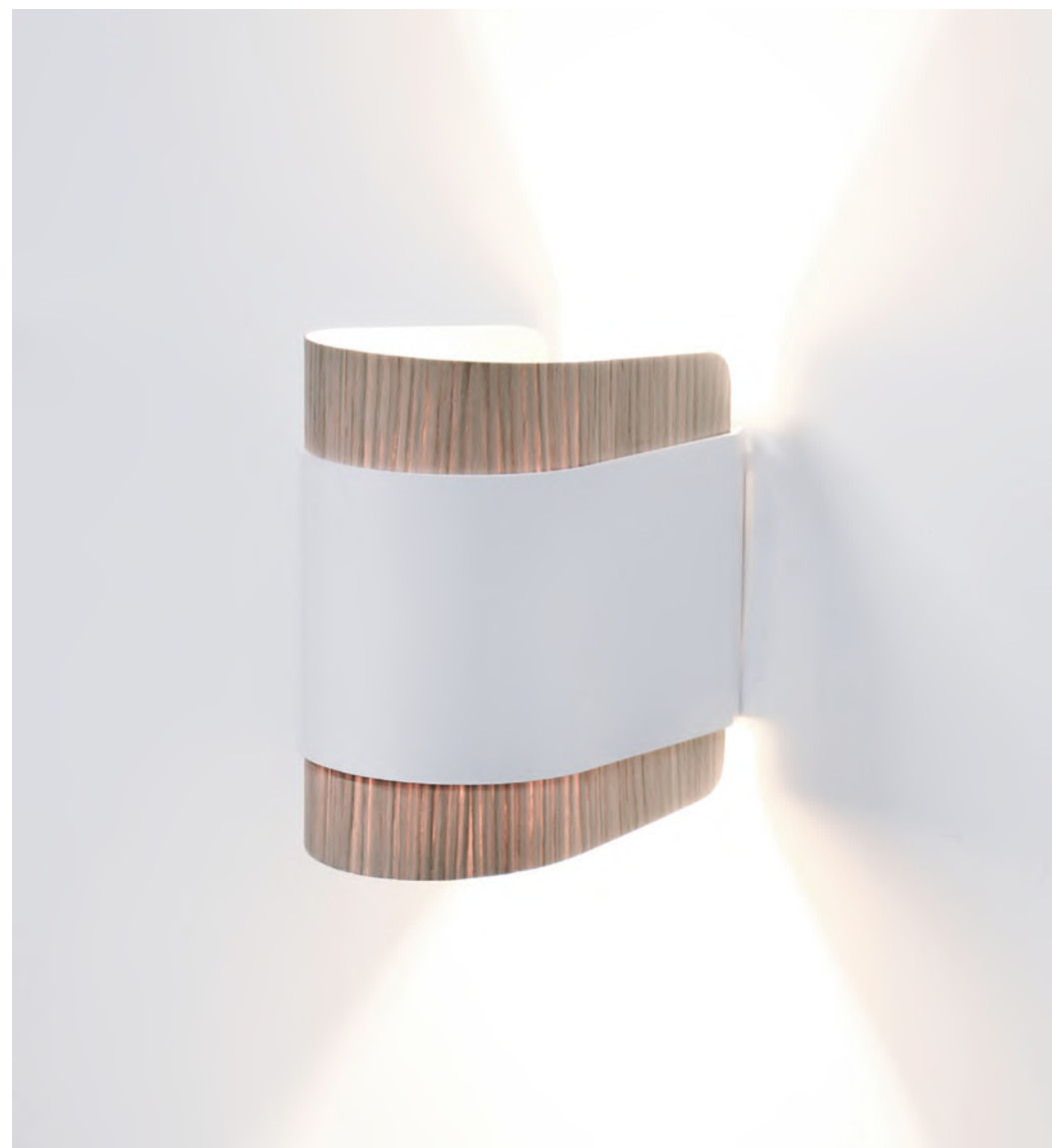


# °LEDit-bi

LEDit-Bi is a wall lamp shining in two directions (Bi-directional). The shade is built up out of two materials (Bi-material cover). The aluminium profile holds a foil that in its material and color can be adapted to your interior and style. As well with the light as with the design of the shade, an accent is set. The here used light sources are standard available bulbs. Any replacement is easy and assured.

Design by Stan Maes





°LEDit-Bi high, white, oak diffuser



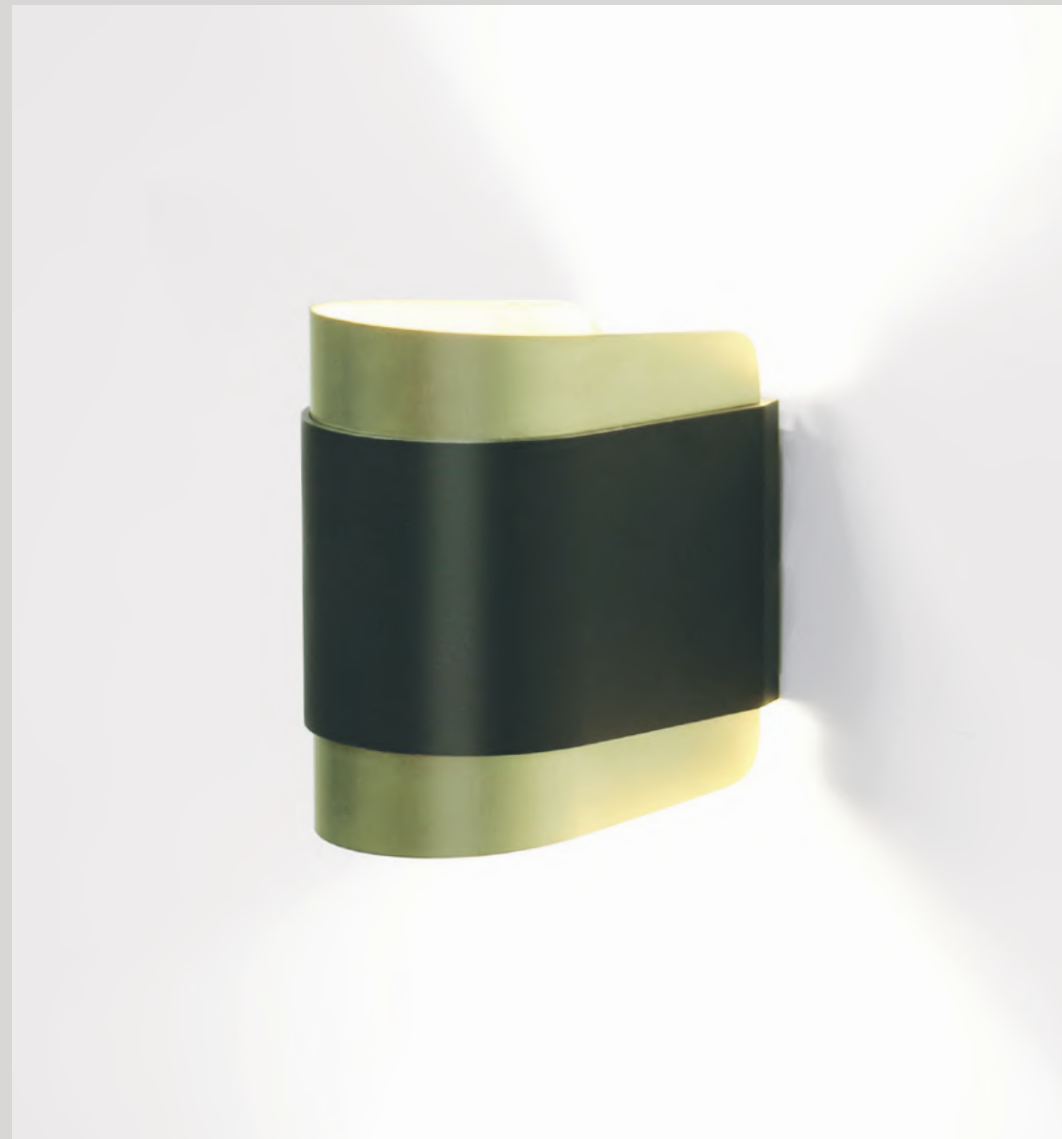
°LEDit-Bi low, white, oak diffuser



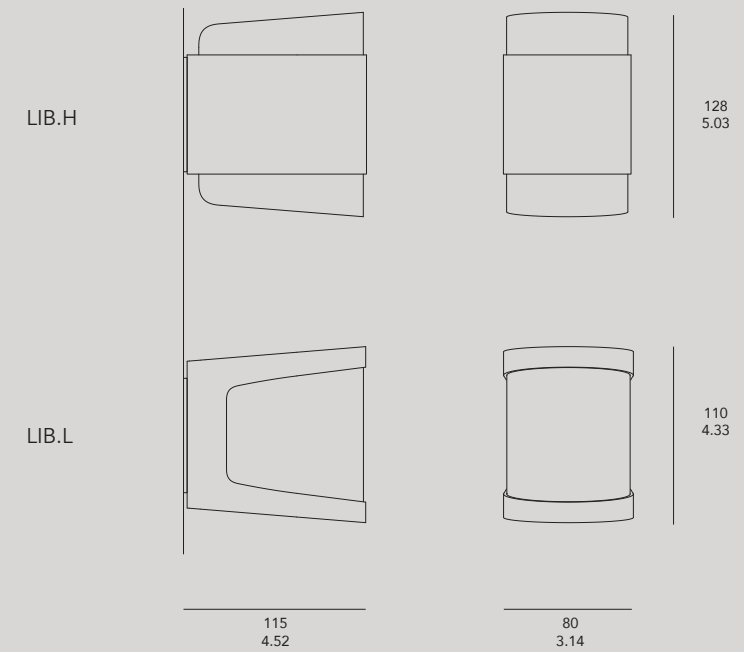
°LEDit-Bi high, black, oak diffuser



°LEDit-Bi low, white, blue PP diffuser




°LEDit-Bi high, black, brushed brass diffuser



LIB.H.C.D GU9 fitting   

Color body **BK** black matt ral 9011  
**WH** white matt ral 9016

Diffuser **BRA.BR** brass brushed  
**BRA.HP** brass high polish  
**OAK** oak veneer  
**WAL** walnut veneer  
**CUS** custom digital print on opal polypropylene (PP) sheet

LIB.L.C.D GU9 fitting   

Color body **BK** black matt ral 9011  
**WH** white matt ral 9016

Diffuser **BRA.BR** brass brushed  
**BRA.HP** brass high polish  
**OAK** oak veneer  
**WAL** walnut veneer  
**CUS** custom digital print on opal polypropylene (PP) sheet